



Forest Service
U.S. DEPARTMENT OF AGRICULTURE

Urban & Community Forestry and the Inflation Reduction Act

ACES: A Community on Ecosystem Services
December 2024

Dana Coelho
National Program Manager
Urban and Community Forestry Program

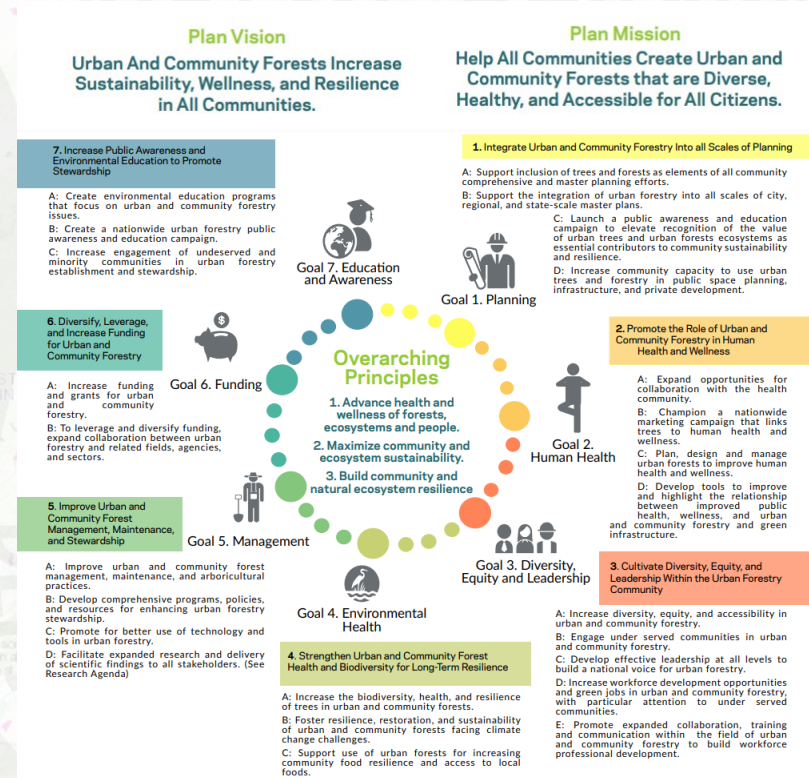
Urban & Community Forestry Program

- Urban forests are vital to human well-being.
- The Forest Service's Urban & Community Forestry (UCF) Program is the only dedicated urban forestry program in the federal government.
- UCF assists State Forestry agencies and other partners in applying nature-based solutions to chronic and emergent economic, social, and environmental challenges.
- UCF is a Justice 40 program directing at least 40% of the overall benefits to disadvantaged communities that are marginalized, underserved, and overburdened by pollution.



Urban & Community Forestry Program

- Historical funding: \$20-40 million per year
- Technical and financial assistance to more than 80% of Americans living in 7,500+ communities managing, developing, or exploring UCF programs
- Guided by the National Urban & Community Forestry Advisory Council (NUCFAC) 10-Year Action Plan and State Forest Action Plans
- Authority to fund tree planting and maintenance, planning and assessment, urban natural areas management, ordinance development, community engagement, conservation education, workforce development, and related activities



UCF Funding through the Inflation Reduction Act

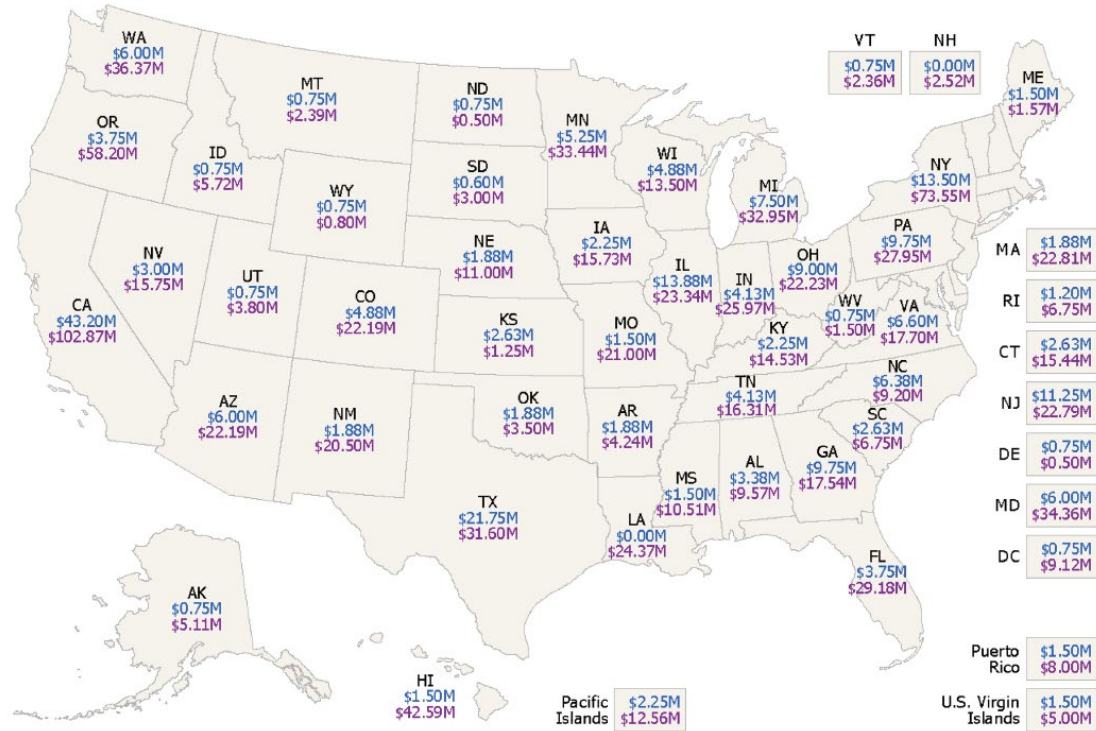
Historic **\$1.5 billion investment** in “tree planting and related activities” with a priority for projects that benefit underserved populations and areas

- \$250 million allocated to State Forestry Agencies
- Funding nearly 400 awards to increase equitable access to trees and green spaces
- **100% of benefits will flow to disadvantaged communities as designated by CEJST, EJScreen, and the EPA Disadvantaged Communities tool**
- Projects in all 50 states, DC, U.S. territories, U.S. affiliated Pacific islands, and tribal communities



Urban and Community Forestry FY 2023 IRA Grant Allocations in Millions of Dollars

- Awards managed by USFS Regional Offices and 12 National Pass-Through Partners
- Includes community, regional, statewide, and multi-state projects
- Awards range in size from \$100k to \$22.8 million
- \$20 million set-aside for tribal and faith-based projects with NPTPs



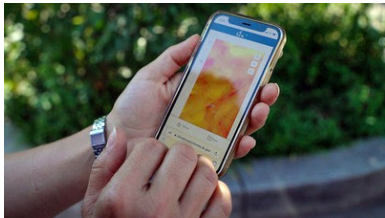
FY 2023 IRA State Allocation - \$250 Million Total

FY 2023 IRA Notice of Funding Opportunity Grants - \$1.13 Billion Total

UCF Funding through the Inflation Reduction Act

Award selection prioritized multiple IRA-UCF themes.

- Tree Planting & Maintenance – 90% will support planting, monitoring, and long-term maintenance of trees.
- Workforce Development – 45% will create and sustain living-wage jobs in green industries.
- Extreme Heat – 43% will help mitigate rising temperatures in growing metropolitans.
- Restoration & Resilience – 60% will support climate-adapted tree planting and strategies to increase community resiliency.
- Community Engagement & Planning – 36% will empower communities to participate in urban forestry decision making.



National Pass-Through Partners

Arbor Day Foundation

American Forests

1890 Universities Foundation

Urban Sustainability Directors Network

Hispanic Access Foundation

GreenLatinos

River Network

Student Conservation Association

Trust for Public Land

Groundwork USA

The Corps Network

Sustainable Forestry Initiative

Hispanic Access Foundation

GreenLatinos

1890 Universities Foundation

River Network

Trust for Public Land

Groundwork USA

Student Conservation Association

The Corps Network

Sustainable Forestry Initiative

Arbor Day Foundation

American Forests

Urban Sustainability Directors Network

Sustainable Forestry Initiative

New Delivery System



USFS WO



USFS Regions



National Pass-Through Partners



State Forestry



Regional Pass-Through Partners



Local Partners

Local Partners

Local Partners

Accomplishment Reporting System @ treesatwork.org



Sign In

TREES AT WORK



[Overview](#) [Tree Canopy App ↗](#) [Data Gallery](#) [Contact Us](#)

GROWING STRONGER COMMUNITIES THROUGH URBAN FORESTRY

Discover how \$1.5 billion in Inflation Reduction Act funding is transforming urban forestry and underserved communities' access to trees and green spaces. Explore the impact these projects are having through mapping, data, reports, and more.



National Urban Tree Canopy Assessment @ treesatwork.org

TreePlotter TREECANOPY

ABOUT THIS PROJECT

VIEW

Use the sliding bars to filter the percentage ranges. This will show you where land cover metrics do not fall within the specified range.

Map and Layer Settings

Display by
Current Canopy

Filter by Tree Canopy
Canopy Change

Filter by Land Cover
Tree Canopy

+

Search for a place

TreePlotter TREECANOPY.US

Arbor Day Foundation | PlanITGeo | UAS

Explore urban forests across the country with TreeCanopy.US! Visualize urban tree canopy changes, identify key areas for planting, and empower your community to support its community forests.

[GET STARTED](#) [ABOUT](#)

Don't show me this again.

Lake Superior

Ottawa

Toronto

Buffalo

Cleveland

Pittsburgh

Philadelphia

Washington

Richmond

Norfolk

Greensboro

Charlotte

Austin

Houston

New York

Jacksonville

TreePlotter TREECANOPY.US

ABOUT THIS PROJECT ? > ⚙️

VIEW PLAN

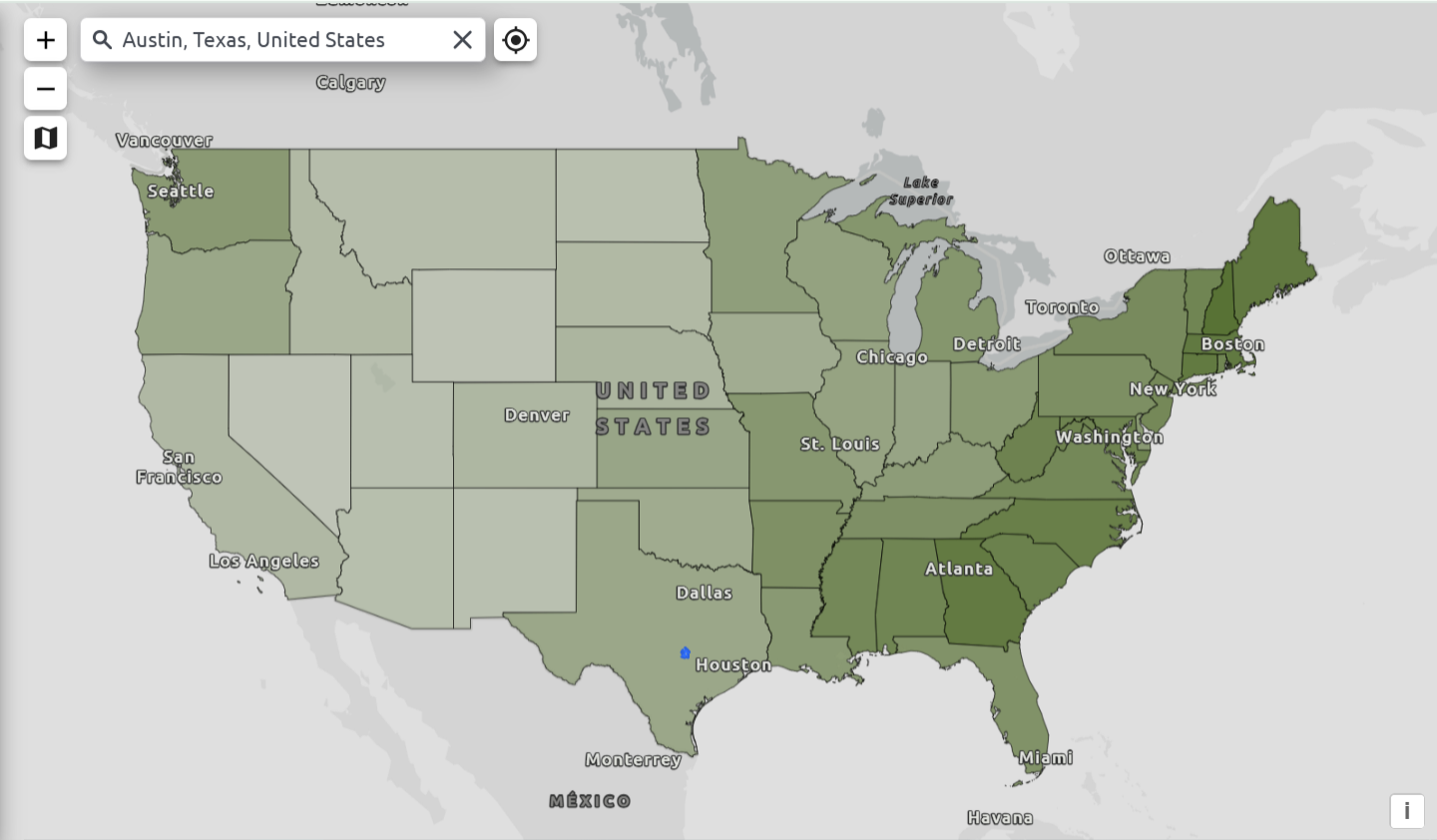
Use the sliding bars to filter the map by certain percentage ranges. This will remove any areas where land cover metrics do not fall within the specified range.

Map and Layer Settings ▾

Display by ?

Filter by Tree Canopy ?

Filter by Land Cover ?



TreePlotter
TREECANOPY.US

ABOUT THIS PROJECT

VIEW PLAN

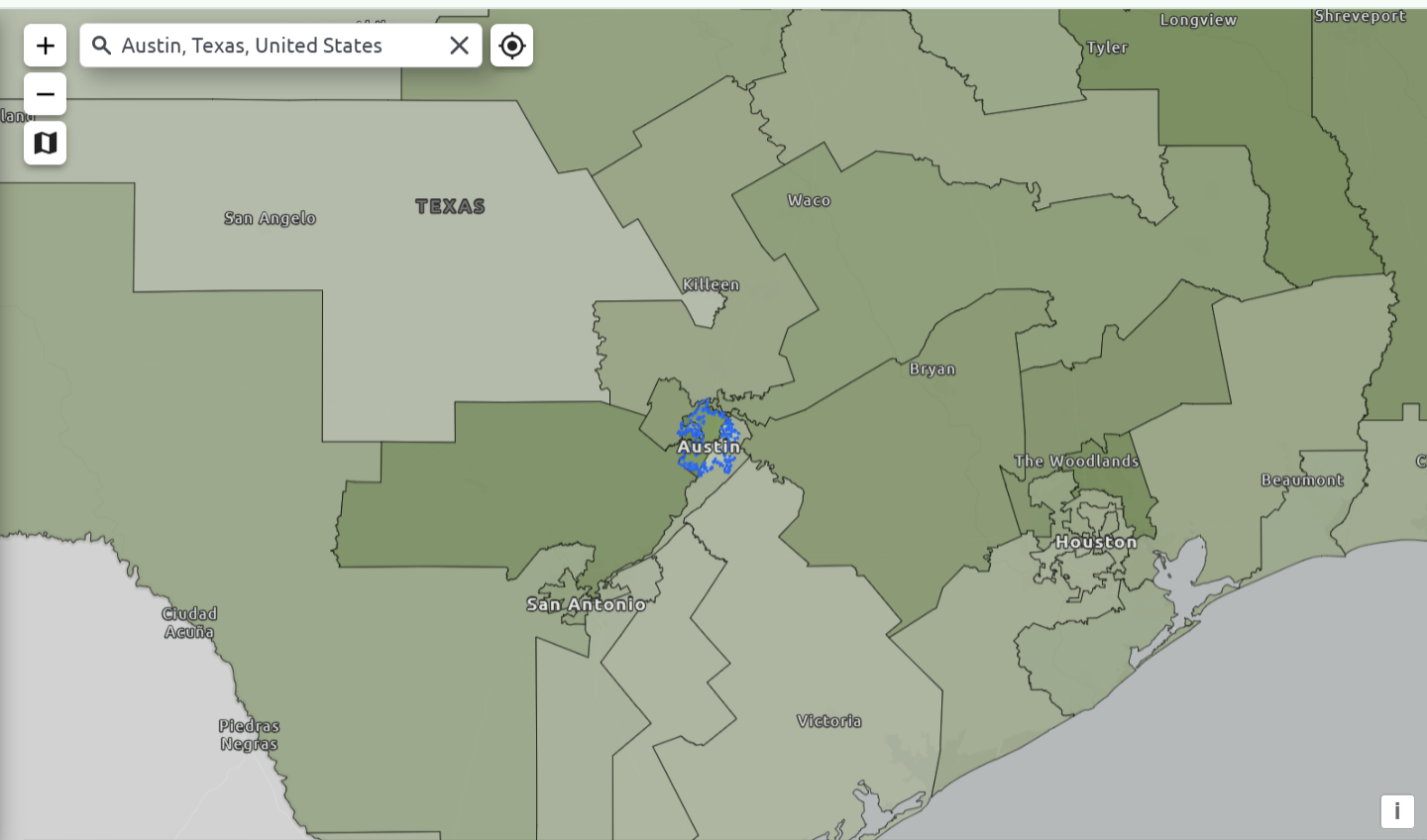
Use the sliding bars to filter the map by certain percentage ranges. This will remove any areas where land cover metrics do not fall within the specified range.

Map and Layer Settings

Display by
Current Canopy

Filter by Tree Canopy
Canopy Change

Filter by Land Cover
Tree Canopy





ABOUT THIS PROJECT ? > ⚙️

VIEW **PLAN**

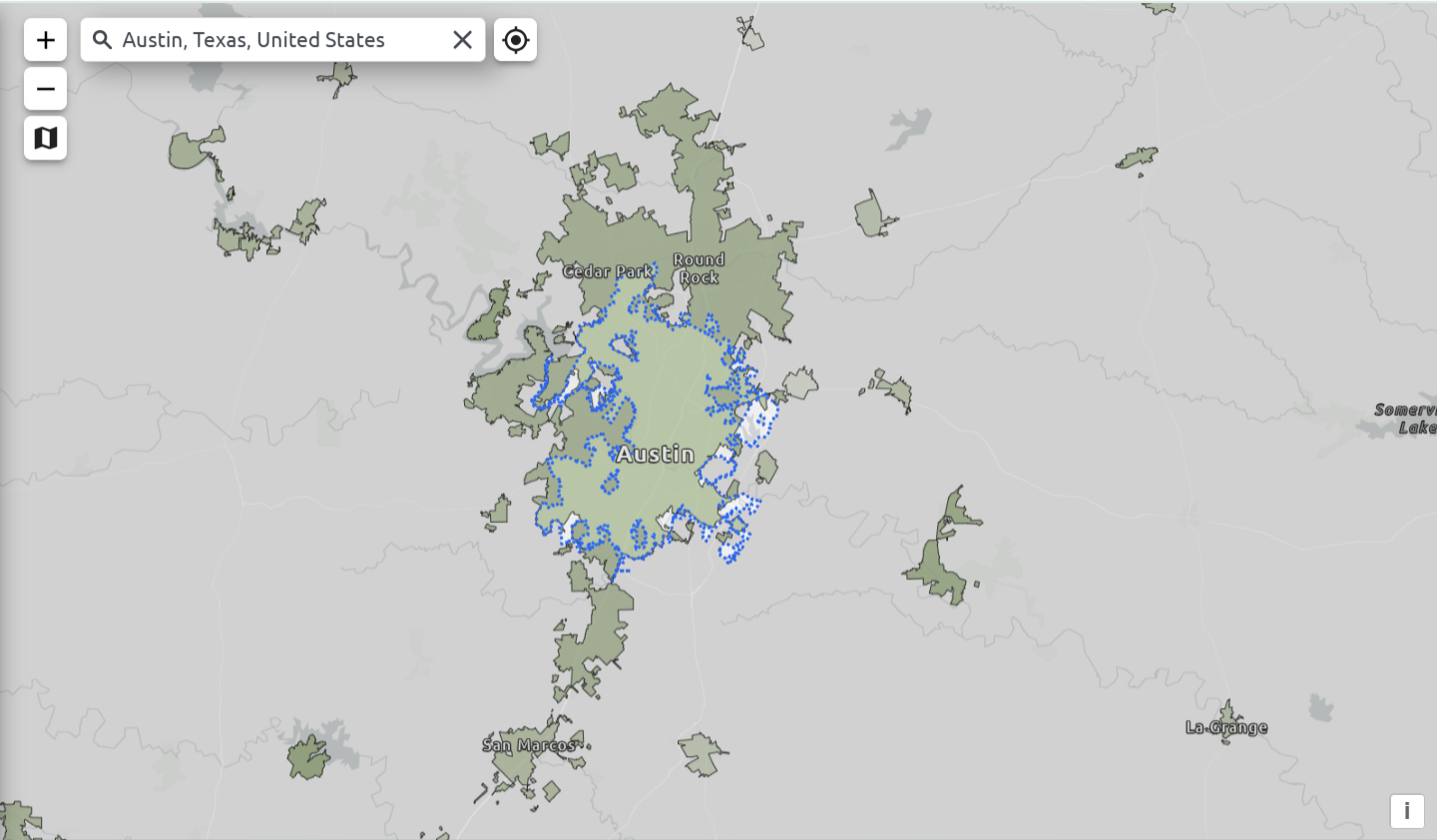
Use the sliding bars to filter the map by certain percentage ranges. This will remove any areas where land cover metrics do not fall within the specified range.

Map and Layer Settings ▾

Display by
Current Canopy ▾ ?

Filter by Tree Canopy
Canopy Change ▾ ?

Filter by Land Cover
Tree Canopy ▾ ?



TreePlotter TREECANOPY.US

ABOUT THIS PROJECT

VIEW PLAN

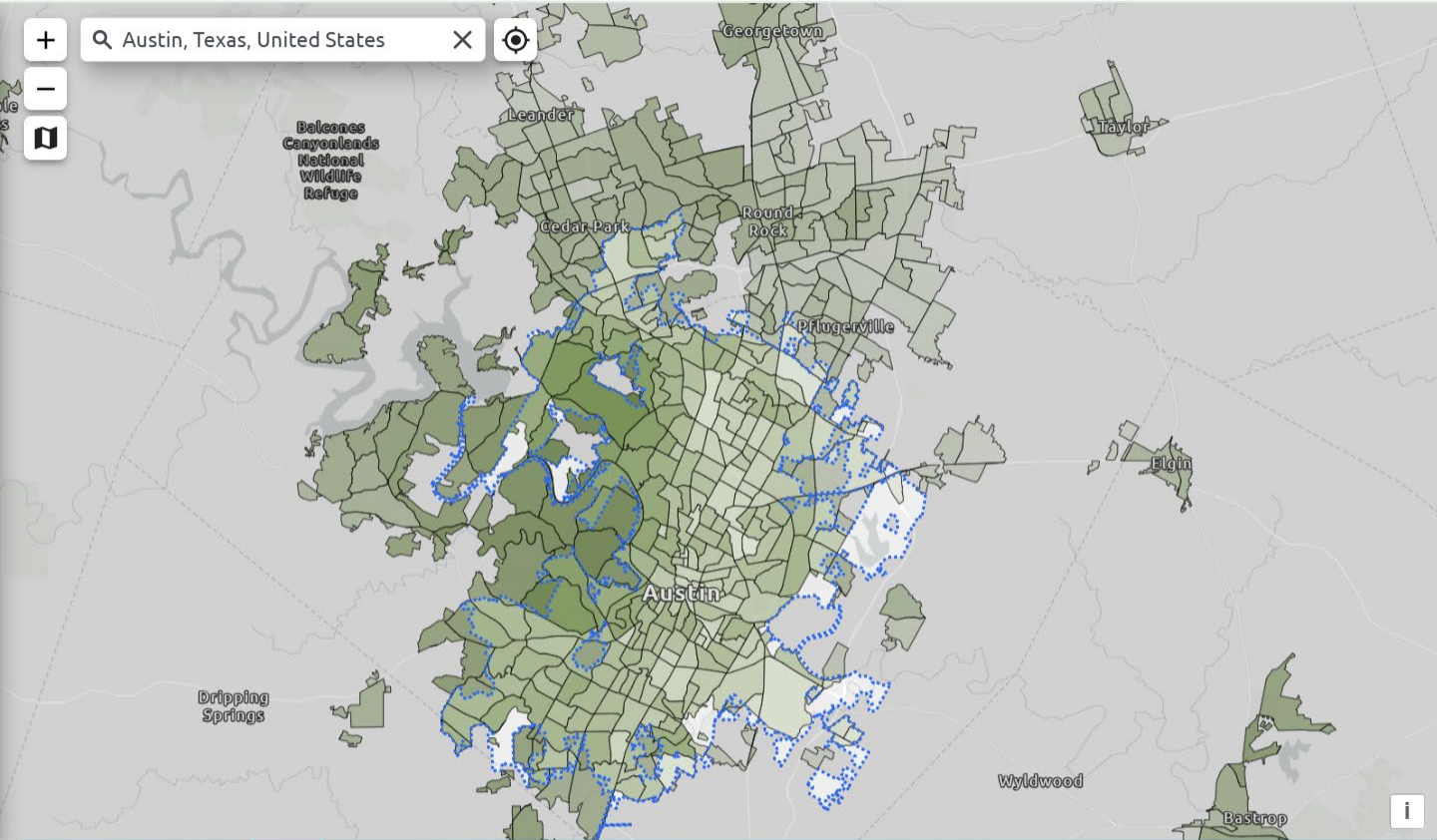
Use the sliding bars to filter the map by certain percentage ranges. This will remove any areas where land cover metrics do not fall within the specified range.

Map and Layer Settings

Display by: Current Canopy

UCF-IRA Disadvantaged Communities: Display Only Disadvantaged Communities

Filter by Tree Canopy: Canopy Change



TreePlotter TREECANOPY.US

ABOUT THIS PROJECT ? > ⚙️

VIEW **PLAN**

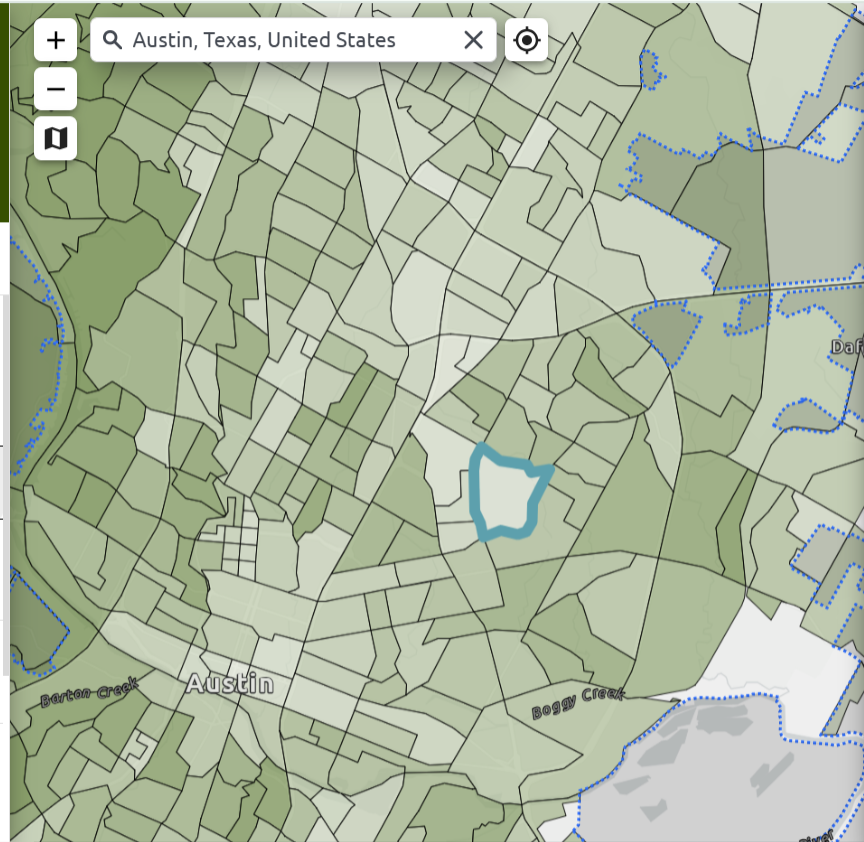
Use the sliding bars to filter the map by certain percentage ranges. This will remove any areas where land cover metrics do not fall within the specified range.

Map and Layer Settings ▾

Display by ?

UCF-IRA Disadvantaged Communities ?
 Display Only Disadvantaged Communities

Filter by Tree Canopy ?

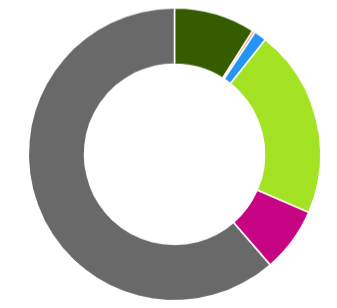


Census Block Group ID: 484530003081

State	TX	
Total Assessed Area	362 acres	?
Historical Canopy (2016)	7.9% (28 acres)	?
Current Canopy (2022)	9.4% (33 acres)	?
Gain in Canopy	1.5% (5 acres)	?
Relative Canopy Change	+18.5%	?

UCF-IRA Disadvantaged Community No ?

Land Cover Classification ?



TreePlotter TREECANOPY.US

ABOUT THIS PROJECT

VIEW PLAN

Display by
Canopy Change

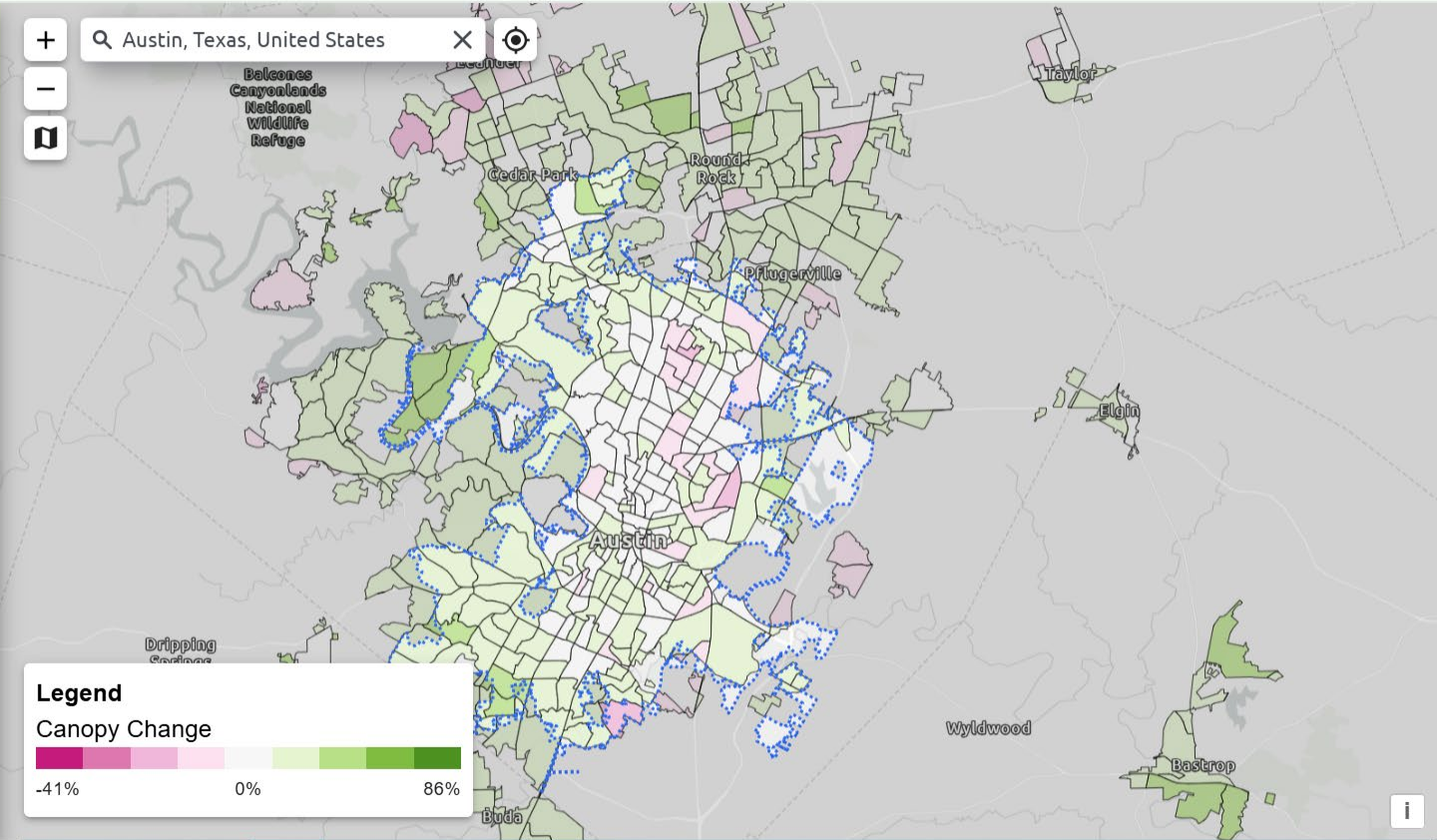
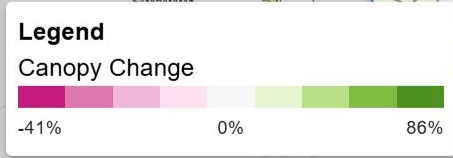
UCF-IRA Disadvantaged Communities
 Display Only Disadvantaged Communities

Filter by Tree Canopy
Canopy Change

Filter by Land Cover
Tree Canopy

RESET

Austin, Texas, United States



TreePlotter TREECANOPY.US

ABOUT THIS PROJECT

VIEW PLAN

FILTER BY PRIORITY



Tree Canopy



Vulnerable Populations



Planting Opportunity

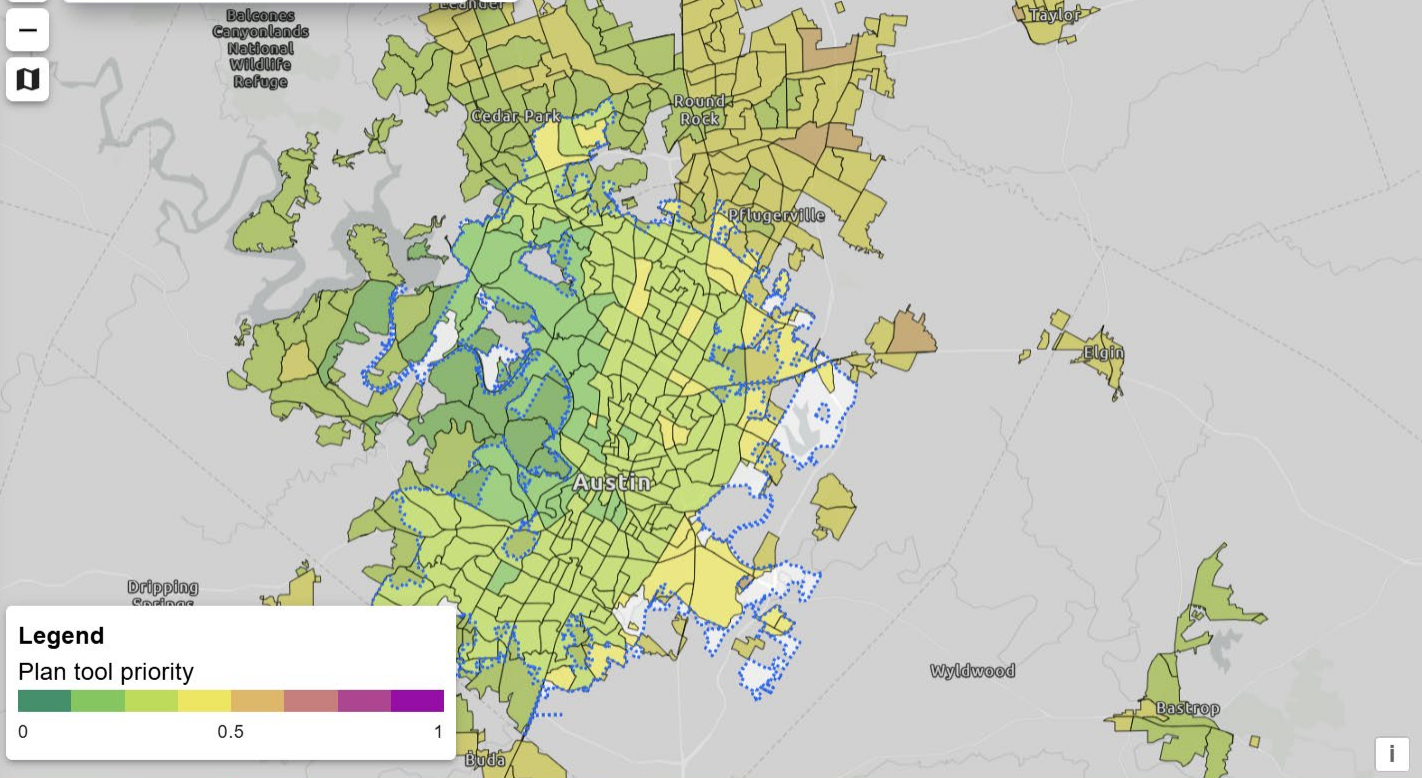


Urban Heat



RESET

Austin, Texas, United States



Legend
Plan tool priority

0 0.5 1

TREES AT WORK



Overview Tree Canopy App ↗ Data Gallery Contact Us

Location

Find address or place

Results: 5

Filter as map moves

Dataset

Census Urban Areas Land Cover and Tree Canopy Analysis

Historic and current land cover and tree canopy summary statistics at the Census Urban Areas geography to inform and maintain planning activities.

Type: **Feature Service**

Date updated: 11/22/2024

Tags: **boundaries, environment, census urban areas, l...** Date created: 11/15/2024

Dataset

Census Tract Land Cover and Tree Canopy Analysis

Historic and current land cover and tree canopy summary statistics at the Census Tract geography and to inform and maintain planning activities. Note that only areas within the Census Designate...

Tag

TREES AT WORK



Overview Tree Canopy App ↗ Data Gallery Contact Us

ASSESSMENT SUMMARY DATASETS

Explore urban tree canopy and land cover data summarized at several administrative levels.

→ VIEW DATA

TREE CANOPY AND LAND COVER SERVICES

Access the raw raster datasets for visualization and analysis, delivered via web mapping services.

→ REQUEST ACCESS

The Inflation Reduction Act investments will increase access to trees and green spaces in communities across the country.



USDA FOREST SERVICE

URBAN AND
COMMUNITY
FORESTRY





Forest Service

U.S. DEPARTMENT OF AGRICULTURE

USDA is an equal opportunity provider, employer, and lender.